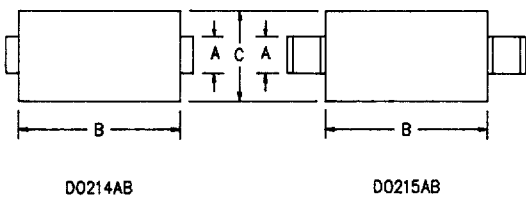
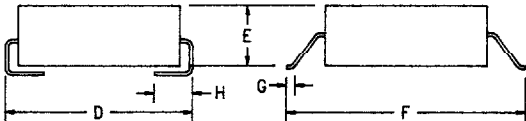


Ultra Fast Recovery Rectifiers

UFS330, UFS340, UFS350



Dim.	Inches		Millimeter		Notes
	Minimum	Maximum	Minimum	Maximum	
A	.117	.123	2.21	2.97	
B	.260	.280	4.57	6.60	
C	.220	.245	3.94	5.58	
D	.307	.322	5.59	7.80	
E	.075	.095	1.90	2.41	
F	.380	.400	6.86	7.37	
G	.025	.040	.381	.762	
H	.030	.060	.760	1.52	



Microsemi Catalog Number	Working Peak Reverse Voltage	Repetitive Peak Reverse Voltage
*UFS330	300V	300V
*UFS340	400V	400V
*UFS350	500V	500V

* Add Suffix J for J Lead or G for Gull Wing Lead Configuration

- Ultra Fast Recovery
- VRRM 300 to 500 Volts
- 3 Amp Current Rating
- 175°C Junction Temperature
- tRR 50ns Max

Electrical Characteristics		
Average forward current	IF(AV) 3.0 Amps	Square wave
Maximum surge current	IFSM 100 Amps	8.3ms, half sine, TJ = 175°C
Max peak forward voltage	VFM .85 Volts	IFM = 0.1A; TJ = 25°C*
Max peak forward voltage	VFM 1.1 Volts	IFM = 3.0A; TJ = 25°C*
Max reverse recovery time	tRR 50 ns	1/2A, 1A, 1/4A, TJ = 25°C
Typical peak reverse recovery time	tRR 25 ns	1/2A, 1A, 1/4A, TJ = 25°C
Max peak reverse current	IRM 10 μA	VRRM, TJ = 25°C
Typical junction capacitance	CJ 16 pF	VR = 10V, TJ = 25°C

*Pulse test: Pulse width 300 μsec, Duty cycle 2%

Thermal and Mechanical Characteristics		
Storage temperature range	TSTG	-40°C to 175°C
Operating junction temp range	TJ	-40°C to 175°C
Weight		.0047 ounces (.013 grams) typical



PH: 303-469-2161
FAX: 303-466-3775

Microsemi Corp.
Colorado

UFS330, UFS340, UFS350

Figure 1
Typical Forward Characteristics

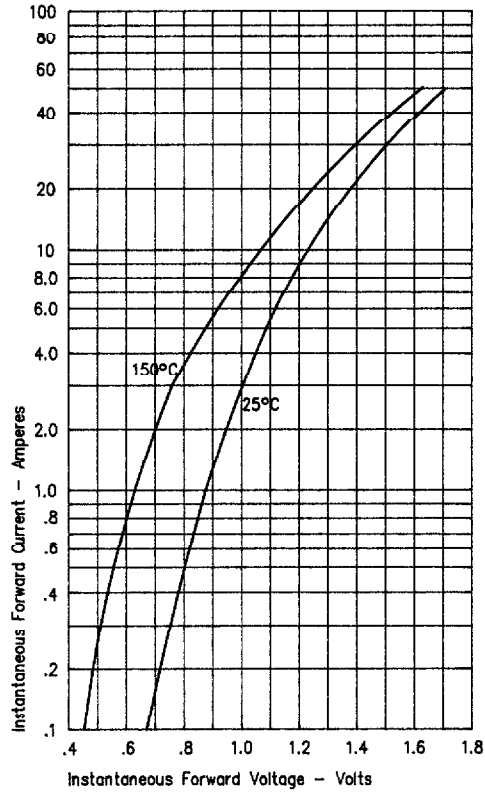


Figure 3
Typical Junction Capacitance

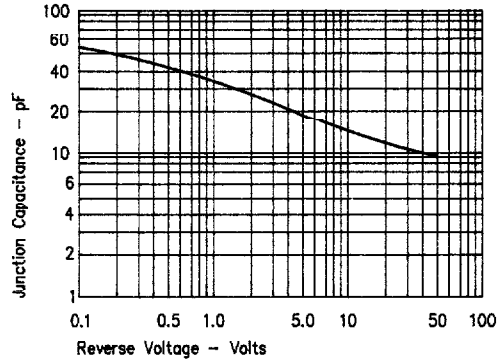


Figure 2
Typical Reverse Characteristics

